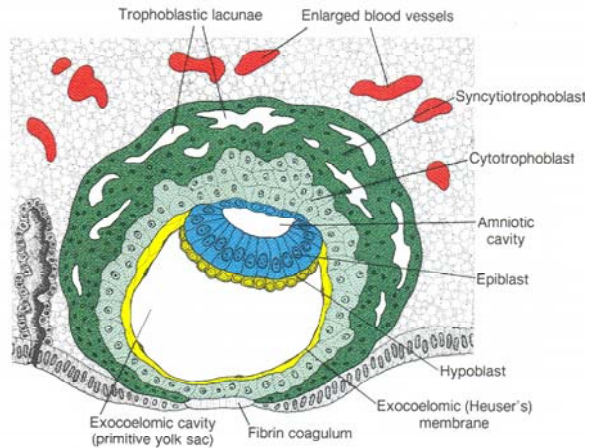
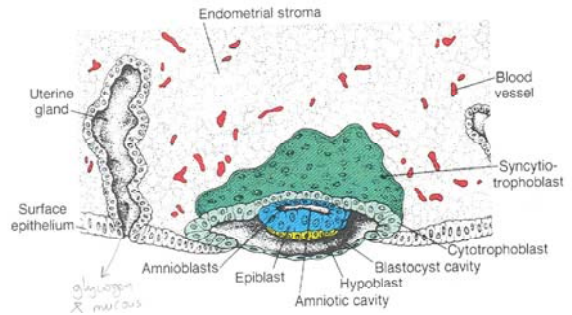


Second week:

- **Week of twos:**
 - **Trophoblast & Embryoblast** (from 1st week)
 - Trophoblast into **cytotrophoblast** and **syncytiotrophoblast**.
 - The embryoblast into **epiblast** and **hypoblast**
 - Two cavities - **amniotic & yolk sac**
 - The extraembryonic mesoderm into **somatopleure** and **splanchnopleure**
- **Hypoblast sends out two waves of endodermal cells that form primitive and definitive yolk sacs.**
- **Extraembryonic Mesoderm is probably derived from yolk sac cells.**
- **Extraembryonic coelom = chorionic cavity**
- **Syncytiotrophoblast is responsible for hormone production.**



Second week..cont.

